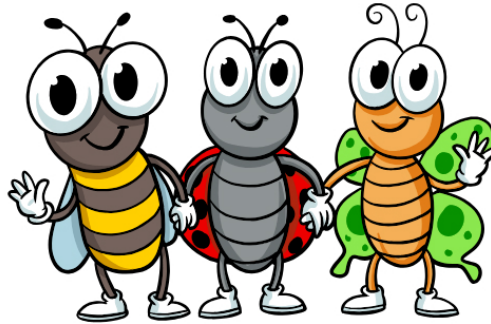


CRITTER DAY CAMP

JUNE 4, 2025

8:00 a.m. - Noon
Mankato City Park
Mankato, KS
www.postrock.ksu.edu
785-378-3174



**Explore interests,
practice team work;
be inspired to think
critically and
creatively; and
have fun!**

Hosted by Jewell County 4-H Council

ALL youth entering Kindergarten thru 3rd grade in the fall are welcome!
\$5.00 fee is due to Post Rock District - Mankato Extension Office. Space is limited.
Register by May 19 at <https://bit.ly/2025CritterDayCamp> (follow QR code).



K-STATE
Research and Extension

Post Rock
District

NCK
Health
COLLABORATIVE

K-State Research and Extension is committed to providing equal opportunity for participation in all programs, services and activities. Program information may be available in languages other than English. Language access requests and reasonable accommodations for persons with disabilities, including alternative means for communication (e.g., Braille, large print, audio tape, and American Sign Language), may be requested by contacting the event contact, Tonia Underwood, four weeks prior to the start of the event, May 7, 2025, at 785-378-3174 or tiunderw@ksu.edu. Requests received after this date will be honored when it is feasible to do so. Language access services, such as interpretation or translation of vital information will be provided free of charge to limited English proficient individuals upon request. Kansas State University Agricultural Experiment Station and Cooperative Extension Service. K-State Research and Extension is an equal opportunity provider and employer.