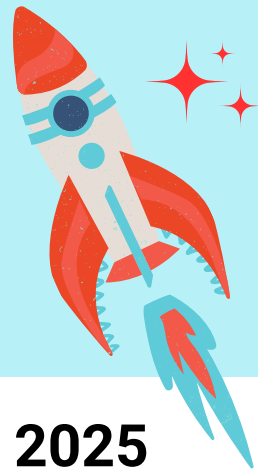


# LAUNCH! DAY CAMP



## Day Camp Explores the Wonders of Space; Teaches Teamwork; and Encourages Critical Thinking, Creativity and Fun

Launch! summer day camp will be filled with fun that is out of this world! Curious youth will blast off into hands-on learning by teaming up to build and test rockets and more. Hands-on activities teach basic principles in STEAM education and application. Youth will boost their leadership skills. Day camp will challenge youth to think creatively and problem solve.

**For:** Youth entering grades 1-5 in the fall

ALL youth are welcome!

**Participation Fee:** \$15

*Fee is non-refundable and payable to  
Post Rock Extension District by cash or check.*

**Meal:** Lunch provided to participants

**Dress:** Dress for the weather and to be active

**Registration Deadline:** June 3

*Space is limited. Register early.*




**Register Online:** Scan QR Code

<https://bit.ly/25LaunchDayCamp>



**June 12, 2025  
9:00 AM - 3:30 PM  
Beloit, KS**

4-H Building, Fairgrounds  
100 W. 10th St.

 (785) 378-3174  
 [postrock4h@ksu.edu](mailto:postrock4h@ksu.edu)  
 [postrock.ksu.edu](http://postrock.ksu.edu)



**K-STATE**  
Research and Extension

Post Rock District



K-State Research and Extension is committed to providing equal opportunity for participation in all programs, services and activities. Program information may be available in languages other than English. Language access requests and reasonable accommodations for persons with disabilities, including alternative means for communication (e.g., Braille, large print, audio tape, and American Sign Language), may be requested by contacting the event contact, Tonia Underwood, four weeks prior to the start of the event at 785-378-3174 or [postrock4h@ksu.edu](mailto:postrock4h@ksu.edu). Requests received after this date will be honored when it is feasible to do so. Language access services, such as interpretation or translation of vital information will be provided free of charge to limited English proficient individuals upon request. Kansas State University Agricultural Experiment Station and Cooperative Extension Service. K-State Research and Extension is an equal opportunity provider and employer.