



POST ROCK DISTRICT 4-H NEWSLETTER

JUNE 2025

📶 POSTROCK.KSU.EDU 📧 POSTROCK4H@KSU.EDU

CHECK EMAIL OFTEN FOR COUNTY FAIR INFORMATION

Post Rock District county fairs will be here soon! Be watching your email for important reminders. The email that you are signed-up for membership in 4-H Online will be used. We are also using the **PRD 4-H Insider Experience Facebook Group** to post reminders.

Do not hesitate to reach out to your local Extension Office if you have any questions. If you are new to 4-H or new to a project, navigating the county fair can be confusing. Post Rock District staff, your club leader, and our entire 4-H family are here to help you!

County Fair Websites:

www.postrock.k-state.edu/4-h/events/county-fairs/

Visit your fair website to find the online fairbooks, forms, and more...

PRE-FAIR ENTRY DEADLINES: PROJECT OWNERSHIP AND VERIFICATION

Each 4-H Council in the Post Rock District has designated a pre-fair entry deadline. **The pre-fair entry deadline is when all project exhibits must be designated for the class which will be shown at the county fair. It is an ownership and verification deadline.** Entries can be dropped, but not added after the pre-fair entry deadline. Any project areas not required by 4-H Council to meet the pre-fair entry deadline will submit entry requirements at the project's fair check-in time. This is a very important date to have marked on your calendar if you want to exhibit a 4-H project (animal and non-animal) at the county fair!

- Jewell County Deadline: June 18
- Lincoln County Deadline: July 1
- Mitchell County Deadline: July 7
- Osborne County Deadline: July 7
- Smith County Deadline: July 1



SMITH COUNTY CLOVER CONNECTION

📶 POSTROCK.KSU.EDU

📞 (785)282-6823

✉️ OVERMILLER@KSU.EDU

RISA OVERMILLER, 4-H PROGRAM COORDINATOR



Fair Rule Changes

1. There will be no paint, powder, or adhesive put on any livestock.
2. Visual Arts will be Jr. and Sr. division.

Fair Grievances

All grievances need to be turned into the extension office by July 1 to be reviewed by Grievance committee.

Fair Superintendents

We are in need of some superintendents for a few project areas. If you are willing to help contact Sandra or Risa at the extension office.

Animal Tags

Come into the office to get your county tags. Have in ear by July 1. EID Tags are put in by Risa, contact her to make an appointment to have them put in.

Important Dates:

June 14 District Dog Show Osborne
June 18 Craft Class Lebanon 9-11 a.m.
June 24 Foods Class Kensington 9-11 a.m.
July 1 Pre- Fair Entries and stall reservations due to extension office
July 11 Foods Judging
July 12 Fair Set Up
July 14 Fashion and Sewing Judging
July 15 Hand Pets/Cats Judging
July 17-21 Smith Co. Free Fair
July 21 Fair Tear Down 11 a.m. and following the auction in the p.m.

Council Notes

Needed Jr. Leaders and Ribbon Handlers - Let Risa know if your child would like to help in one of these areas.

June 18 - Craft Class

Lebanon Community Center

9 a.m. - 11 a.m.

Class size limited to 10

Register @ 785-282-6823



June 24 - Foods Class

United Church of Kensington

9 a.m. - 11 a.m.

Class size limited to 10

Register @ 785-282-6823



THE GREEN LINK DISTRICT & STATE NEWS

 [POSTROCK.KSU.EDU](https://postrock.ksu.edu)  POSTROCK4H@KSU.EDU
POST ROCK DISTRICT 4-H NEWSLETTER



WONDER DAY CAMP

Wonder summer day camp will encourage youth to power up, have fun, and work collaboratively through out the day's adventures. Youth will use teamwork, problem-solving, and creative thinking to save the day. Participants will explore basic principles of STEAM (science, technology, engineering, art, and math) while further developing mindfulness and a growth mindset. Come practice leadership and increase confidence during the energetic day camp experience!



June 26 in Downs / July 1 in Mankato / July 2 in Lincoln

Same Great Camp Offered at 3 Locations - Attend One!

9:00 a.m. - 3:30 p.m.

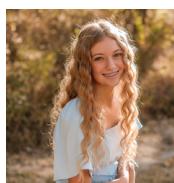
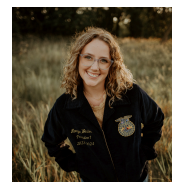
All 1st through 5th graders welcome!

Registration Deadline is June 17. Space is limited.

Register Online at <https://bit.ly/25WonderDayCamp>.

WE WELCOME OUR SUMMER STAFF

Morgan Weston was an active member of the West Beloit 4-H Club for 10 years. Morgan recently completed her first year at the University of Kansas, where she is pursuing a dual major in Visual communication and Journalism. She hopes to build a career in advertising and branding, combining her creativity with strong communication skills. Morgan is excited to give back to the organization that helped shape her and looks forward to supporting local 4-H programs.



Lexi Goheen and Kayla LaRosh are both proud 4-H members from Osborne County. This summer, they are focusing their efforts on Day Camps, and a variety of other youth programming events across the District. Their involvement reflects their passion for helping kids learn, and have fun while doing it!

SUMMER CLUB IDEAS

Looking to add some excitement to your 4-H Club meetings in June, July, and August? Here's some summer ideas for your group to consider:

- Picnic at a Park: Have a club meeting and picnic. Soak up the summer sunshine!
- Joint Meeting: Invite a neighboring club to join for a joint meeting!
- Poster/Project Work Day: Share supplies while members mentor and support each other with making your fair posters and finishing other projects.
- County Fair Project Tour: Have a meeting during a slow time at the county fair. Tour the buildings together, giving each member a chance to share their project work.
- Parade Float: Build a float to share your love of 4-H during a local parade.
- Give Back: Organize a trash pickup to keep your community looking great!
- If you have a unique idea...we'd love to hear about it!

THE GREEN LINK DISTRICT & STATE NEWS

📶 POSTROCK.KSU.EDU 📧 POSTROCK4H@KSU.EDU
POST ROCK DISTRICT 4-H NEWSLETTER

STATE FAIR ANIMALS

Exhibiting an animal beyond the 4-H division at a Post Rock District county fair means that ownership and identification must meet the requirements outlined by the specific show's governing body. The 4-H member is responsible for understanding the deadlines and expectations involved. If your animal species doesn't classify for state livestock nomination, visit the [Kansas 4-H State Fairbook](#) for important ownership, verification, and exhibition deadlines and details. Contact your local Extension Office as soon as possible if you are considering showing at the Kansas State Fair, so we can share resources to help you navigate the process

STATE LIVESTOCK NOMINATIONS

All market animals and commercial females youth would like to be eligible for the Kansas State Fair Grand Drive and/or Kansas Junior Livestock Show (KJLS) must be nominated. The [Kansas Youth Livestock Program](#) website outlines the [State Livestock Nomination Process](#) under the "Nomination Information" tab. Families are highly encouraged to use the resources available, especially the *Rookie Guide*.

The nomination process is through an online system. Families will purchase DNA envelopes in advance, submit their animal and exhibitor information online, then mail their completed and signed DNA samples by the deadline. Extension Agents and FFA Advisors will approve nominations online. Post Rock District will NOT sell Kansas 4-H EID tags over-the-counter at our Extension Offices. The state requires our staff to approve all State Nominations for livestock, and part of that approval process is confirming that we have physically seen each Kansas 4-H EID tag in your livestock animal's ear at tagging time (i.e. county weigh-in event).

Exhibitors who nominated animals in past years need to use their existing ShoWorks account. Those who need help accessing their account may request a password reset through ShoWorks or contact the [Kansas Youth Livestock Program](#) for assistance. Returning exhibitors should not create a new account. The ShoWorks website is <https://kansasnom.fairwire.com/>.

Grand Drive and KJLS Important Dates:

- June 5: Last Day to Order Small Livestock DNA Envelopes
- June 15: Small Livestock Nominations Due & DNA Postmarked
 - Market Swine, Commercial Gilt
 - Market Lamb, Commercial Ewe
 - ALL Meat Goat (Market & Breeding)
- June 15: Commercial Heifer Nominations Due
- June 15: Registered Breeding Heifer Papers in Exhibitor's Name
- June 15: Registered Breeding Gilt Papers in Exhibitor's Name
- July 1: Registered Breeding Ewe Papers in Exhibitor's Name
- July 15: Kansas State Fair Grand Drive Entry Deadline
- July 25: Kansas State Fair Grand Drive Late Entry Deadline
- August 15: KJLS Entry Deadline
- August 31: KJLS Late Entry Deadline
- September 5 - 7: Kansas State Fair Grand Drive
- October 3-5: Kansas Junior Livestock Show



**KANSAS
YOUTH LIVESTOCK
PROGRAM
WEBSITE**

THE GREEN LINK DISTRICT & STATE NEWS

 POSTROCK.KSU.EDU  POSTROCK4H@KSU.EDU
POST ROCK DISTRICT 4-H NEWSLETTER

HORSE PROJECT REMINDERS

Horse project members are strongly encouraged to get your horse coggins testing completed soon. This will prevent you from having any issues with participation at 4-H and non-4-H events during the spring and summer. Kansas Division of Animal Health has revised regulations and it is now the responsibility of the horse owner to have a negative Coggins test. A negative Coggins test is valid for 12 months. It is up to the participant to provide verification if event organizers require proof of a negative Coggins test! Read the full regulation on the [Kansas Division of Animal Health website](https://www.kansas4-h.org/projects/animal-science/horse/docs/SampleHorseID.pdf).

Planning to show at the State 4-H Horse Show? There are important deadlines that must be met to be eligible for the State 4-H Horse Show. Kim Naber, 4-H Program Coordinator, is an excellent resource for the equine project and she is happy to explain the requirements and deadlines. She can be reached at 785-346-2521 or kimn@ksu.edu. It's best to reach out to Kim or your local Extension Office ASAP, so you can be on track to meet all requirements.

NEW 4-H Horse Identification Certificate - The certificate has been updated for the 2025 4-H program year. *The NEW 4-H Horse Identification Certificate must be used to properly ID 4-H horse projects by June 1 of the current program year to be eligible for the Kansas State Fair.* Breed registration papers will no longer be acceptable forms of identification. You need to keep the original copy, after getting signatures from the local extension office. An example of how to correctly complete the ID form is available at <https://www.kansas4-h.org/projects/animal-science/horse/docs/SampleHorseID.pdf>.

Equine Science Webinar - This webinar is helpful to any horse owner and is a good reference as 4-H members expand their knowledge of basic equine nutrition. Watching these recorded webinars is a great way to participate in project learning activities.

DISTRICT DOG SHOW IS JUNE 14 FOR ALL COUNTIES

Post Rock District Dog Project Leader, Kelli Burrus, has been leading dog project meetings at the Osborne County Fairgrounds on Sunday afternoons at 3:00 p.m. June 1 is the next practice. To help dog project members prepare for the dog show, there will be a mock show on June 13 in Osborne. The 2025 Post Rock District 4-H Dog Show will then take place the morning of Saturday, June 14. Families enrolled in the dog project received details by email. If you think you missed the correspondence, call or email Kim Naber at kimn@ksu.edu or 785-346-2521.

NW KANSAS 4-H DOG CONFERENCE & SHOW IS JUNE 28 IN PHILLIPS COUNTY



NW Kansas 4-H Dog Conference & Show is at Phillips County Fairgrounds on Saturday, June 28. The cost is \$10 per 4-H member for conference + 2 entries and \$5 for additional entries. This is a Kansas State Fair Qualifier Show. Subject to Kansas 4-H Dog Show Rules. Concessions will not be available. Register by June 15 at https://kstate.qualtrics.com/jfe/form/SV_eu4z62nAjQcbM4C.

THE GREEN LINK DISTRICT & STATE NEWS

📶 POSTROCK.KSU.EDU 📧 POSTROCK4H@KSU.EDU
POST ROCK DISTRICT 4-H NEWSLETTER

COUNTY FAIR PROJECTS

All exhibits entered in the 4-H/FFA division of a county fair must be the handiwork of the exhibitor; the grower, where agricultural exhibits are shown; and the owner and feeder, where livestock is entered. All exhibits entered in the 4-H/FFA division of a county fair must be the result of the current program year's work. Ownership is defined so that the project (animal, garden, crop, exhibit creation, sewing, photo, etc.) is under the daily care and supervision of the member; all project-related practices, expenses, and management are the responsibility of the member; and all county fair exhibits should be a planned part of the project.

READ YOUR FAIR BOOK CLOSELY!

There are general rules and project-area rules that need to be met in order for you to be able to exhibit in the 4-H/FFA division of the county fair. Don't wait until the last minute to read the rules. Call your Extension Office if you have questions!

FAIR PREMIUM AUCTIONS AND PROJECT SALES

County Fair Premium Auctions and Project Sales are NOT governed or clerked by Post Rock Extension District nor the local county's 4-H Council. We are also not the fiscal agent for the event. The premium auction or project sale is operated differently in each county. You can contact your local extension office to learn about the event in your county so you can be prepared to meet all requirements, if you want to participate. We are happy to share the expectations and rules set by the group that governs your respective event.

KANSAS 4-H LIVESTOCK SWEEPSTAKES

Save the date for the 2025 Kansas 4-H Livestock Sweepstakes! It will be hosted August 23-24 in Manhattan. The deadline to register is August 1. All participants must be entered by their local extension unit. The contest rules, schedule, and more information is posted on the [Livestock Sweepstakes](#) page of the youth livestock website. Youth may participate in as many or as few contests as they would like over the course of the weekend. Individuals who compete in livestock judging, skillathon, and senior/open meat judging will be eligible for the sweepstakes award. Teams who compete in livestock judging, skillathon, senior/open meat judging, and quiz bowl will be eligible for the sweepstakes team award.

SHOOTING SPORTS STATE QUALIFIER



Stede Underwood, certified instructor, is planning to organize a 4-H Archery Qualifier at Glen Elder State Park on July 27. Save the date. Details will be emailed to members enrolled in the archery project as they become available. You have to qualify for State Shooting Sports at a local qualifier. You can attend a qualifier anywhere in Kansas, and you are allowed to attend as many as you want to register for. The state will post qualifier dates and registration information at www.kansas4-h.org/projects/natural-resources/shooting-sports/shooting-sports-events/local-qualifiers.html.

THE GREEN LINK DISTRICT & STATE NEWS

 POSTROCK.KSU.EDU  POSTROCK4H@KSU.EDU
POST ROCK DISTRICT 4-H NEWSLETTER

MEMBER ACHIEVEMENT PINS DUE OCTOBER 1

Member Achievement Pins are a great opportunity to be recognized for your hard work and activities throughout the 2024-2025 4-H year! Applications, with all required signatures, are due to your local Post Rock District office no later than close of business on Wednesday, October 1. Please plan ahead so all signatories can review your application and assist with any questions or concerns.

Download the Member Achievement Pin and Key Award applications for the Kansas 4-H website at www.kansas4-h.org/resources/awards-and-recognition/. If you are not sure what awards you are eligible for, please call the Extension Office. Post Rock District has helpful information to assist you with completing your applications at www.postrock.k-state.edu/4-h/member-resources/member-achievement/.

4-H RECORD BOOK - DON'T WAIT TO BEGIN!

Don't delay getting your 4-H permanent and project record books started! Kansas 4-H offers paper-based and online record keeping forms. Work on them regularly this summer! Find details at the www.postrock.k-state.edu/4-h/record_keeping_resources/.

Why 4-H records and reporting? Record keeping and reporting are valuable life skills taught to members of the Kansas 4-H program. The purpose and objectives of 4-H records and reports:

- To learn how to set goals, how to make plans for action, and how to decide how well you did (evaluation).
- To learn the skills of record keeping and organization to use now and in the future. Examples: finances, taxes, health, immunizations, careers, scheduling, etc.
- To learn to communicate, prioritize, and summarize your project mastery and experiences.
- To practice responsibility by completing a task.
- To evaluate information that will market personal skills through future resumes and application forms.
- To allow 4-H members to tell how they have grown, what they have learned, where they came up short and to do it within outlined parameters.
- To provide an opportunity for competition at the County, Regional and State level.

4-H CLUB SEAL PROVIDES MANY SUMMER OPPORTUNITIES

As the 4-H year progresses, summer is the perfect opportunity for clubs to review their Club Seal checklist. Make sure your club is on track and has completed all the necessary activities to support your 4-H members in earning their pins and recognition! Details at www.postrock.k-state.edu/4-h/club-and-council-support/.

SHARE HIGHLIGHTS OF YOUR AND PROJECT WORK

We love to hear what individual members and clubs are up to! We want to celebrate your learning and success. Share your highlights (photo and details) to postrock4h@ksu.edu to be featured on our Facebook page!

THE GREEN LINK DISTRICT & STATE NEWS

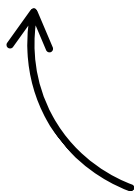
 POSTROCK.KSU.EDU  POSTROCK4H@KSU.EDU
POST ROCK DISTRICT 4-H NEWSLETTER

FUNDRAISERS AND AWARD SOLICITATION FOR 4-H NEED TO NOTIFY THE EXTENSION OFFICE IN ADVANCE

Communicate with your local Extension Office in the early planning stages of your fundraiser to make sure you meet all Kansas 4-H policies and best practices relating to raising money in the name of 4-H. We have a form that helps share the necessary information. Complete the form and submit it to your local Extension Office or email to postrock4h@ksu.edu BEFORE beginning your fundraiser. Do not promote or implement your fundraiser until you receive approval from Post Rock District. Allow at least 10 business days for the fundraiser to be reviewed. If the fundraiser needs to be revised, the individual listed on the form is the one who will be contacted. Find the form at www.postrock.k-state.edu/4-h/club-and-council-support/finances-and-fundraising/.



4-H BRANDING REQUIRED ON CLOTHING, AWARDS, AND SWAG



The use of the K-State Research and Extension/Kansas 4-H co-wordmark is required on all 4-H print, digital, apparel, and merchandise. This requirement applies to all designs created at the local, county, district, area, and state levels BEFORE ordering any items to ensure your club, council, fair board, etc. are using licensed vendors and that all designs include the required co-wordmark. We have a form to help with approval. Submit the form & design artwork (in full color) to your local Extension Office or by email to postrock4h@ksu.edu. Allow at least 10 business days for the design to be reviewed. If edits need to be made, the individual listed on the form is the one who will be contacted. Find the form at www.postrock.k-state.edu/4-h/club-and-council-support/branding-and-marketing/.

4-H CODE OF CONDUCT

Summer is a busy time in 4-H! It provides many opportunities to learn and grow as a person and team. Remember, when you signed up for 4-H, you agreed to follow the Kansas 4-H Code of Conduct. This includes youth as well as all adults assisting youth involved in 4-H and FFA. To remind yourself of the code of conduct, visit www.kansas4-h.org/resources/policy-guide/.

**HAVE A QUESTION? FEELING CONFUSED? WE ARE HERE TO HELP! CALL/VISIT YOUR
EXTENSION OFFICE AND WE ARE HAPPY TO ASSIST!**

K-State Research and Extension is committed to providing equal opportunity for participation in all programs, services and activities. Program information may be available in languages other than English. Reasonable accommodations for persons with disabilities, including alternative means for communication (e.g., Braille, large print, audio tape, and American Sign Language) may be requested by contacting the event contact four weeks prior to the start of the event. Post Rock District staff and office contact information is available at www.postrock.ksu. Requests received after this date will be honored when it is feasible to do so. Language access services, such as interpretation or translation of vital information will be provided free of charge to limited English proficient individuals upon request.
Kansas State University Agricultural Experiment Station and Cooperative Extension Service
K-State Research and Extension is an equal opportunity provider and employer.